



 **Beta** *Aston*

2018

40% off list
Promotion

Valid

01/04/2018 - 30/06/2018

Prices do not include V.A.T.

Technical fabric

Lightweight and sturdy, for absolutely



500x400x180 mm



C5

Rucksack

- Removable interior tool panel
- Six exterior pockets and two interior pockets
 - Waterproof plastic base
 - Double safety lace for fixing rucksack to shoulders
 - Ergonomic padded back

021050000

~~£ 123,00~~

£ 73,80



Bag opens at front for easier access to tools at workplace



C6T

Rucksack with castors

- Telescopic handle for easy transport
- Built-in castors with practical dustproof cover for use as a rucksack
- Two removable tool panels
- Interior PC pocket and five exterior pockets
- Waterproof plastic base

480x370x220 mm

021060010

~~£ 186,00~~ £ 111,60



C11

Box

- Hard water resistant plastic base
- Elastic tool bands and interior and exterior tool pockets
- Document holders built into lid

021110000

~~£ 73,00~~

£ 43,80

C7

Bag

- 2 removable interior tool panels
- 2 exterior front pockets
- Interior bottom made of plastic, with removable partitions



440x370x170 mm

021070000

~~£ 206,00~~ £ 123,60



C9

Bag

- Hard base
- Interior and exterior tool pockets
- Shoulder strap for easier transport

021090000

~~£ 96,00~~

£ 57,60



550x200x210 mm

tool bags

safe transportation of your tools

Containers

C12 Bag

- Removable interior tool panel
- Elastic tool bands and spacious interior and exterior pockets
- Hard, waterproof base with rubber feet



500x370x270 mm

021120000

~~£ 170,00~~ £ 102,00



400x240x220 mm



C10

021100000

~~£ 125,00~~ £ 75,00

520x220x250 mm

C10S

021100001

~~£ 97,00~~ £ 58,20

420x220x250 mm

C8 Trolley

- Telescopic carrying handle
- 2 removable interior tool panels
- Interior PC pocket and 2 exterior front pockets
- Can accommodate tool box item C10S



470x370x280 mm

021080000

~~£ 212,00~~ £ 127,20



CP15L

Tool boxes, made from plastic, empty

- 3 tool trays built into cover with adjustable partitions
- 1 interior tote-tray with adjustable partitions
- Carrying capacity: 30 kg



558x277x270 mm

021150202

£ 59,00 **£ 35,40**



CP15



445x240x250 mm

021150201

£ 45,00 **£ 27,00**

CP17

Tool box, made of stainless steel and plastic, removable tote-tray, empty

021170500

£ 80,00 **£ 48,00**



500x200x220 mm



C41H



Two-module tool trolley

- Sheet metal frame and plastic top, Remarkably sturdy and light.
- 2 modules: 1 upper tool box, 1 module with 2 drawers 95 mm in height, 1 pull-out case made of plastic, 66 mm high, and 1 drawer 295 mm in height.
- Oversized castors (160 mm), built into frame for easy transport - for example, on steps.
- Side centralized lock
- Drawers with ball bearing slides and double closing hook.
- Telescopic aluminium handle.
- Small tool holder built into upper tool box.
- Lower drawer with double ball bearing slides



C41H W
RAL 9016

C41H Y
RAL 1023

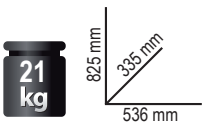
C41H R
RAL 3000

C41H V
RAL 6016

C41H B
RAL 5002

C41H G
RAL 7016

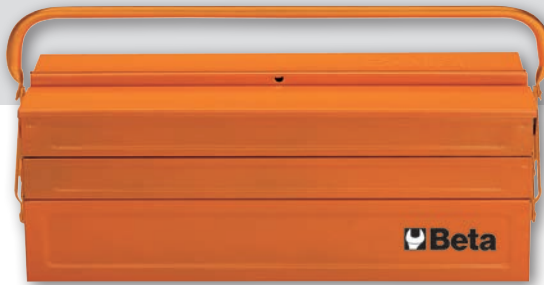
C41H N
RAL 9005



041000002	041000021	041000012	041000008
041000024	041000006	041000010	041000005
£ 495,00	£ 297,00		

C20L

Five-section cantilever tool box, made from sheet metal, empty



021200002

~~£ 74,00~~ **£ 44,40**

550x200x210 mm



C56

Workbench

- Worktop made of painted sheet metal with upstand.
- Steel frame with 6 supporting legs.
- Two drawers with lock.
- Can be fixed to floor.

Kg
1200



056000201 056000202 056000203

~~£ 830,00~~ **£ 498,00**

82 kg
930 mm
640 mm
2000 mm

Worktop made from multi-ply wood with holes for vice item 1599F/125 (to be ordered separately).

Kg
1500



C59A

Endurance workbench with 1 cab with 6 drawers

- Drawers protected by foamed rubber mats.
- Hard-wearing nylon drawer front.
- Drawers can accommodate thermoformed trays.
- Front centralized safety lock.
- Lower object shelf.
- Can be fitted with paper roll holder (2400S-R/PC) and bottle holder (2400S/PF), to be ordered separately.



059000001 059000021 059000041

~~£ 1.380,00~~ **£ 828,00**

900 mm
700 mm
2000 mm

115 kg

n°	n° 367 mm 588 mm	↓ max
4	70 mm	25 kg
1	140 mm	30 kg
1	280 mm	35 kg

C39 Aluminium AL

Mobile roller cab

- Four castors with steel cores, Ø 125 mm: 2 fixed and 2 steering (one with brake).
- Front centralized safety lock.

Uprights and drawer front made of aluminium alloy
+STURDY + LIGHTWEIGHT



- Pull-out drawer with opening system throughout its length.

Sturdy multi-purpose worktop with tote-trays and holes to accommodate screwdrivers.



Built-in side and rear bottle and paper holders.



C39/7

n°	h	max
5	70 mm	30 kg
1	140 mm	35 kg
1	210 mm	35 kg

039000001	039000002	039000003
61 kg	£ 1.440,00	£ 864,00



C39/6



039000031	039000032	039000033
55 kg	£ 1.360,00	£ 816,00

n°	h	max
5	70 mm	30 kg
1	140 mm	35 kg
1	210 mm	35 kg



C39/8



039000041	039000042	039000043
64 kg	£ 1.680,00	£ 1.008,00

n°	h	max
6	70 mm	30 kg
2	140 mm	35 kg

C24S

Mobile roller cab

- Four castors with steel cores, Ø 125 mm: 2 fixed and 2 steering (one with brake).
- Front centralized safety lock.
- Can accommodate paper roll holder item 2400S-R/PC, to be ordered separately.



Sturdy ABS worktop.

kg
800



Pull-out drawer with quick release system made of fibreglass-reinforced nylon, opening throughout length of drawer.

Built-in side bottle holder.

955 mm
445 mm
740 mm



C24S/7

n°	h	max
5	70 mm	25 kg
1	140 mm	30 kg
1	210 mm	30 kg

024002071 024002072 024002073

58 kg

~~£ 770,00~~

£ 462,00



C24S/6

Mobile roller cab with 6 drawers



024002061 024002062 024002063

55 kg

~~£ 750,00~~

£ 450,00

n°	h	max
4	70 mm	25 kg
1	140 mm	30 kg
1	280 mm	35 kg



C24S/8

Mobile roller cab with 8 drawers



024002081 024002082 024002083

61 kg

~~£ 810,00~~

£ 486,00

n°	h	max
6	70 mm	25 kg
2	140 mm	30 kg

M10

024500010

~~£ 359,00~~ £ 215,40



22

42 6-7-8-9-10-11-12-13-14-15-16-17-18-19-20-21-22-24-27-30-32-36 mm

M60

024500060

~~£ 316,00~~ £ 189,60



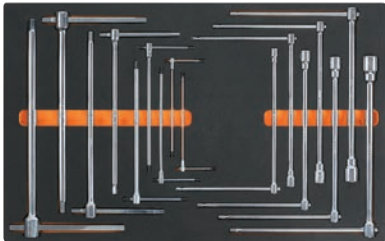
24

○ 96T 2-2,5-3-4-5-6-7-8-10 mm
 ○ 97BTX/SC8 T9-T10-T15-T20-T25-T27-T30-T40
 ○ 944BX 5-6-7-8-10-13 mm

M65

024500065

~~£ 456,00~~ £ 273,60



16

○ 950 8-10-12-13-14-17-19 mm
 ○ 951 2,5-3-4-5-6-8-10-12-14 mm

M110

New item

024500110

~~£ 955,00~~ £ 573,00



36

Ⓜ 850MQ
 ○ 860TX/A10
 ○ 920MQ/A 8-9-10-11-12-13-14-15-16-17-18-19-20 mm
 ○ 920MQ/PE 5-6-8-10-12 mm
 920MQ/21 125 mm
 920MQ/22 250 mm
 920MQ/55A
 ○ 943MQ 6-7-8-10 mm

M30

024500030

~~£ 326,00~~ £ 195,60



31

55 6x7-8x9-10x11-12x13-14x15-16x17-18x19-20x22-21x23-24x27-30x32 mm
 90 6x7-8x9-10x11-12x13-14x15-16x17-18x19-20x22-21x23-24x27-30x32 mm
 96BPC/SC9 1,5-2-2,5-3-4-5-6-8-10 mm

M63

024500063

~~£ 291,00~~ £ 174,60



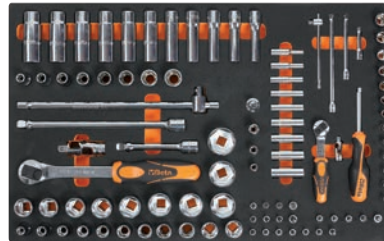
8

○ 952 7-8-10-12-13-14-17-19 mm

M100 12" 14"

024500100

~~£ 995,00~~ £ 597,00



98

895/1 - 895/3 - 895/6
 ○ 900 4-4,5-5-5,5-6-7-8-9-10-11-12-13-14 mm
 ○ 900L 5-6-7-8-9-10-11-12-13 mm
 ○ 900ME 3-4-5-6-7 mm
 ○ 900LP 0,8x4-1x5,5-1,2x6,5-1,2x8 mm
 ○ 900PH PH1-PH2-PH3-PH4
 ○ 900TX T10-T15-T20-T25-T27-T30-T40
 900/20 50 mm - 900/20L 100 mm
 900/21 150 mm
 900/25 - 900BG/30 - 900/42
 ○ 900/55
 ○ 920A 8-10-11-12-13-14-15-16-17-18-19-20-21-22-23-24-26-27-28-30-32 mm
 920/15 - 920/25
 920AN/125 125 mm
 920AN/250 250 mm
 920/42
 ○ 920/55
 ○ 920FTX 10-12-14-16-18-20-22-24 mm
 ○ 920AL 10-12-13-14-15-16-17-18-19-21-22 mm

M120 12"

024500120

~~£ 1.050,00~~ £ 630,00



75

○ 920A 10-11-12-13-14-15-16-17-18-19-20-21-22-24-26-27-30-32 mm
 ○ 920FTX 10-12-14-16-18-20-22-24 mm
 ○ 920/55 125 mm
 ○ 920PE 5-5L-6-6L-7-7L-8-8L-10-10L-12-12L-14-14L
 ○ 920TX T20-T25-T27-T30-T40-T45-T50-T55-T60-T20L-T25L-T27L-T30L-T40L-T45L-T50L
 ○ 920AL 10-12-13-14-15-16-17-18-19-22-24-27-30-32 mm

Thermoformed trays

M121 ¹²

024500121

~~£ 965,00~~ £ 579,00



46

- 920BP 5L-6L-8L-10L-5XL-6XL-8XL mm
- 920TX T20-T25-T27-T30-T40-T45L-T50L-T55L-T60L-T70L
- 920XZN 4-5-6-6L-8-8L-10-10L-12-12L-14-14L-16-18 mm
- 920ES 7-9-10-11-12L-14L-16L-7XL-9XL-10XL-11XL-12XL-14XL-16XL mm
- 920/36A

M130

024500130

~~£ 338,00~~ £ 202,80



13

- 1032 180 mm
- 1034 170 mm
- 1036 175 mm
- 1038 175 mm
- 1048 250 mm
- 1052 240 mm
- ⌚ 1082BM 160 mm
- 1098 220 mm
- 1112 250 mm
- 1128BM
- 1150BM 180 mm
- 1166BM 160 mm
- 1168BM 160 mm

M160 *New item*

024500160

~~£ 415,00~~ £ 249,00



15

- 1128MQ
- 1048MQ
- ⌚ 1084MQ 200 mm
- ≡ 1150MQ 200 mm
- ≡ 1162MQ 160 mm
- ≡ 1164MQ 160 mm
- ⊕ 1272MQ PH0x60 - PH1x80
PH2x100 - PH3x150 mm
- 1274MQ 2,5x75 - 3x100 - 4x100
5,5x125 mm
- 1777MQ/U

M210

024500210

~~£ 153,00~~ £ 91,80



25

- 1201 2,5x50-3x75-4x100-5,5x125-6,5x150-8x200 mm
- 1201N 4x30 mm
- ⊕ 1202 PH0x60-PH1x80-PH2x100-PH3x150 mm
- ⊕ 1202N PH1X30 mm
- ⊕ 1207TX T6-T7-T8-T9-T10-T15
T20-T25-T27-T30-T40-T45
- 1253

M230

024500230

~~£ 332,00~~ £ 199,20



25

- 30 Ø 2-3-4 mm
- 31 Ø 2-3-4-5-6-8 mm
- 32 Ø 4 mm
- 34 150 mm
- 35 200-250 mm
- 36 125 mm
- 1370 500 g
- 1390 Ø 35 mm
- 1692 3 m
- 1712
- 1719BMA/Q 200 mm
- ▲ 1719BMA/T 200 mm
- 1719BMA/P 200 mm
- ▶ 1719BMA/M 200 mm
- 1719BMA/R 200 mm
- 1737
- 1771 18 mm

M288 *New item*

024500288

~~£ 207,00~~ £ 124,20



9

- 1128BMX
- 1130BMX
- 1719BMA/Q 200 mm
- 1719BMA/P 200 mm
- ▶ 1719BMA/M 200 mm
- 1719BMA/R 200 mm
- 1726BM 400mm
- 1728BM (5)
- 1771BM 170 mm
- 1778V18 185 mm

90/S7

Set of 7 double ended deep offset ring wrenches

6x7-8x9-10x11-12x13-14x15-16x17-18x19 mm

000900163

~~£ 71,50~~ £ 42,90



96T/S5P



Set of 5 offset hexagon key wrenches with handles

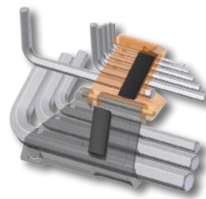
Ø 2,5-3-4-5-6 mm

000960946

~~£ 52,50~~ £ 31,50



wrench locking system

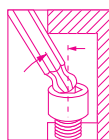


96BP-CO/SC9

Set of 9 ball head offset hexagon key wrenches, coloured



Ø mm	L mm
1,5	91
2	100
2,5	113
3	130
4	142
5	163
6	185
8	205
10	231



97BTX/SC8

Set of 8 ball head offset key wrenches, for Torx® head screws



Ø mm	L mm
T9	65
T10	74
T15	84
T20	96
T25	98
T27	109
T30	123
T40	136



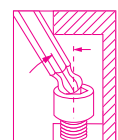
New item

97BTXL/SC8

Set of 8 ball head offset key wrenches, long model, for Torx® head screws



Ø mm	L mm
T9	83
T10	89
T15	103
T20	114
T25	130
T27	145
T30	166
T40	183



Find your size immediately!

000961519

~~£ 27,50~~ £ 16,50

000970164

~~£ 62,00~~ £ 37,20

000970364

~~£ 57,50~~ £ 34,50

Extra-long model +30%

Male-end wrenches

142SN/SC9

Set of 9 swivel end ratcheting combination wrenches with compact support

8-10-11-12-13-14-15-17-19 mm



001420259

£ 219,00 £ 131,40

142C/A12

Set of 12 ratcheting combination wrenches, straight short series in case

8-9-10-11-12-13-14-15 -16-17-18-19 mm



001420175

£ 188,00 £ 112,80

186 8-32

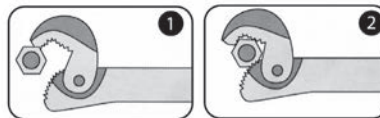
Self-locking wrench with automatic take-up device, for hexagons, 8 to 32 mm

Ideal for hexagon, Spline, square and Torx® head screws, including damaged screws.



Effective on worn screws

-  SPLINE®
12 sides
-  Square
-  Torx®
-  Hexagonal
-  70% rounded bolt



001860008

£ 44,00 £ 26,40

New item







Bits



867/C20

Assortment of 18 bits for RIBE® screws, with 10 mm hexagon drive and 2 accessories, in soft foam tray and metal case

	867/1	L 38 mm	○ 10 mm - □ 3/8
	867/2	L 38 mm	○ 10 mm - □ 1/2
	867RIBE	⊗ L 30 mm	5-6-7-8 -9-10 -11-12-13 mm
	867RIBE/L	⊗ L 75 mm	5-6-7-8 -9-10 -11-12-13 mm

008670920

£ 95,50 £ 57,30

900/C39-R



Assortment of 11 hexagon sockets, 21 bits and 7 accessories in plastic case

	861LP	●	0,6x4,5-1,2x6,5-1,2x8 mm
	861PE	○	2,5-3-4-5-6 mm
	861PH	⊕	PH1-PH2-PH3
	861PZ	⊕	PZ1-PZ2-PZ3
	861RTX	⊕	T10-T15-T20-T25-T27-T30-T40 mm
	892/0	●	1/4" - 1/4"
	895/1	○	1/4" - 1/4"
	900	○	5-5,5-6-7-8-9-10-11-12-13-14 mm
	900/20		50 mm
	900/20L		100 mm
	900/25		
	900BG/30C		



reversible ratchet with rotating handle (900/58)

009000938

~~£ 184,00~~ £ 110,40

900/C12MR



Assortment of 12 hexagon sockets, 20 bits and 7 accessories in metal case

	861LP	●	0,5x3-0,8x5,5-1x5,5-1,2x6,5 mm
	861PE	○	3-4-5-6-8 mm
	861PH	⊕	PH0-PH1-PH2-PH3
	861TX	⊕	T8-T10-T15-T20-T25-T30-T40
	895/1	○	1/4" - 1/4"
	900	○	4-5-5,5-6-7-8-9-10-11-12-13-14 mm
	900/20		50 mm
	900/21		150 mm
	900/25		
	900/42		
	900BG/30		

335x145x60 mm



reversible ratchet with rotating handle (900/58)

009000962

~~£ 201,00~~ £ 120,60



910A/C16HR



Assortment of 16 hexagon sockets and 5 accessories in foam tray, in metal case

	910A	○	6-7-8-9-10-11-12-13-14 15-16-17-18-19-21-22 mm
	910/21		125 mm
	910/22		250 mm
	910/25		
	910/42		

335x145x60 mm



reversible ratchet with rotating handle (910/58)

009100935

~~£ 267,00~~ £ 160,20



920A/C17MR



Assortment of 17 hexagon sockets and 5 accessories in foam tray, in metal case

	920A	○	10-11-12-13-14-15-16-17-18-19 20-21-22-24-27-30-32 mm
	920/21		125 mm
	920/22		255 mm
	920/25		
	920/42		

420x185x60 mm



reversible ratchet with rotating handle (920/58)

009200937

~~£ 300,00~~ £ 180,00



Pliers

1031/S4

Set of 4 circlip pliers

1034 170 mm
 ⌀ 19 ÷ 60 mm

010310000

~~£ 81,00~~ £ 48,60



1038 175 mm
 ● 19 ÷ 60 mm

1032 180 mm
 ⌀ 19 ÷ 60 mm

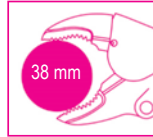
1036 175 mm
 ● 19 ÷ 60 mm

1057A

Automatic self-locking pliers with adjustable force

010570124

~~£ 37,50~~ £ 22,50



1047/240

Slip joint pliers, push button alignment

- Quick, accurate adjustment by pressing push button
- No accidental misadjustment
- Heat-treated jaws

010470240

~~£ 33,00~~ £ 19,80

L 240 mm ⌀ Max 36 mm Max 32 mm



1048

Slip joint pliers, boxed joints

- Slip-proof double layer PVC coated handles

010480015

~~£ 29,00~~ £ 17,40



1169BM/D3

Set of 1 combination pliers, 1 long needle nose pliers and 1 diagonal cutting nippers

1082BM 160 mm

1150BM 180 mm

1166BM 160 mm

011690123

~~£ 80,50~~ £ 48,30



1169MQ/D2

Assortment of insulated combination pliers and insulated diagonal cutting nippers

1150MQ 180 mm

1000 V

011690143

~~£ 82,00~~ £ 49,20



1182MQ 160 mm

1243/D7



Set of 7 screwdrivers
with steel heads

1241 ● 1x5,5x100-1,2x6,5x125-1,2x8x150-1,6x10x200 mm

1242 ⊕ PH1x4,5x100-PH2x6x100-PH3x8x150 mm



012430017

~~£ 80,00~~ **£ 48,00**



1263/D8

Set of 8 screwdrivers

1260 ● 2,5x50-3x75-4x100- 5,5x125-6,5x150 mm
1262 ⊕ PH0x60-PH1x80- PH2x100 mm



012630008

~~£ 56,00~~ **£ 33,60**



1263/D10

Set of 10 screwdrivers

1260 ● 3x75-3,5x100-4x125-5,5x150-6,5x150 mm
1262 ⊕ PH0x60- PH1x8-PH2x100 mm
1260N ● 4x30 mm
1262N ⊕ PH1x30 mm



012630010

~~£ 70,50~~ **£ 42,30**



1267TX/D7

Set of 7 screwdrivers

1267TX ⊕ T6-T8-T10-T15-T20-T25-T30



012670307

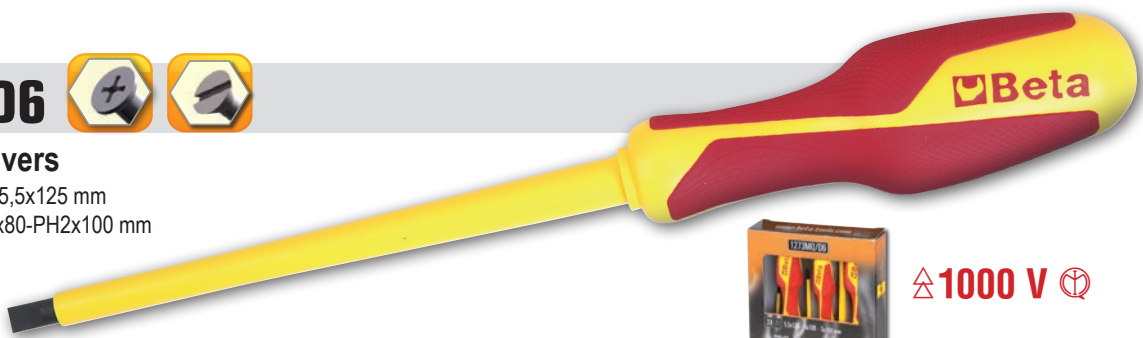
~~£ 52,50~~ **£ 31,50**

1273MQ/D6



Set of 6 screwdrivers

1274MQ ● 3x100-4x100-5,5x125 mm
1272MQ ⊕ PH0x60-PH1x80-PH2x100 mm



△ 1000 V ⊕

012730851

~~£ 57,50~~ **£ 34,50**

1428/SB11

Set of pullers for damaged nuts square drive with support

3/8" **12"**



3/8" 8-10-11-12-13-14 mm **12"** 15-16-17-18-19 mm



014280111

~~£ 213,00~~ £ 127,80

1429/SB7

Set of 7 pullers for damaged screws and stud bolts with square drive with support

3/8" **12"**

2-3-4-5-6-8-10 mm

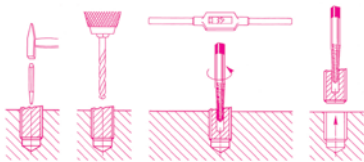
014290107

~~£ 89,00~~ £ 53,40



1430/S8

Set of 8 tapered extractors for broken screws and studs, made from hardened steel (item 1430/..), in plastic case



	M	A mm
1430/1	3÷6	2,5
1430/2	6÷8	3,0
1430/3	8÷11	4,5
1430/4	11÷14	6,0
1430/5	14÷18	8,0
1430/6	18÷24	11,0
1430/7	24÷33	14,0
1430/8	33÷50	21,0



014300108

~~£ 67,50~~ £ 40,50

437C

Set for repairing damaged spark plug threads, M14x1.25 mm

• Helicoids height: 8.40 - 12.40 - 16.40 mm (5 pcs/size)



004370100

~~£ 101,00~~ £ 60,60

Compact heavy-duty riveting pliers

- Optimized lever ratio for increased compactness and handiness.
- 3 jaws lock rivet for a perfect grip.
- Adjustable head for pulling rivet by 2 to 5 leg movements.

1740B 280 2,4÷4,8 mm steel

017400280

~~£ 59,00~~ £ 35,40

1740B 330 3,2÷6,4 mm steel

017400330

~~£ 65,00~~ £ 39,00



1741B

Riveting pliers supplied with 4 interchangeable nozzles



017410000

~~£ 35,00~~ £ 21,00

1741U

Ultra compact riveting pliers with adjustable force with 4 interchangeable nozzles



017410450

~~£ 39,00~~ £ 23,40



1750 500

Lever operated grease guns, 500 cc

017500500

~~£ 32,50~~ £ 19,50



1742/C4

Riveting pliers item 1742 with assortment of 400 threaded steel insets

017420005

~~£ 227,00~~ £ 136,20



	M	Ø mm	n.
1742R-A/M3	3	5	100
1742R-A/M4	4	6	100
1742R-A/M5	5	7	100
1742R-A/M6	6	9	100

415x155x60 mm

Electronic battery chargers

- Allow charging and maintenance of all battery types
- Automatic multi-stage charge cycle
- Reverse polarity and short-circuit protection



New item **1498/2A** **1498/4A**

Power supply voltage:	220V-240V	220V-240V
Frequency:	50-60 Hz	50-60 Hz
Rated current (min-max):	1 Amp	1-4 Amp
Battery voltage:	12V	6V/12V
Battery capacity:	2Ah-40Ah	4Ah-80Ah
Degree of protection:	IP65	IP65
Battery type:	Lithium Wet-Gel Dry-AGM	Wet-Gel Dry-AGM

1498/4A



014980104

~~£ 147,00~~ **£ 88,20**



1498/2A



014980102

~~£ 126,00~~ **£ 75,60**



1498LT/12



Portable high-performance starter, ultralightweight

Operating voltage	12V
Continuous amperage	800A
Maximum pickup amperage	2000A
Peak amperage	4000A
Cable length	500 mm
Battery type	4-cell LifePo4
Memory saving function	Yes
Dimensions:	260x135x72
Complete with charging power supply	12 V 1,3A

4000A

Weighs no more than 2.5 kg!



Includes memory save

014980012

~~£ 810,00~~ **£ 486,00**

1498CM/12



Portable motorcycle emergency starter

3 functions in 1:

- starter
- additional battery for electronic devices (tablets, smartphones etc.)
- high-brightness LED torch



Peak current:	400A
USB outlet:	5V 2,1A
Dimensions	130x50x15 mm
Weight:	300 g
Starting output:	12 Volt

240x185x60 mm

New item

014980030

~~£ 233,00~~ **£ 139,80**

- Equipment:
- Starting cable with insulated clamps and protection diode
 - Mains battery charger
 - Car battery charger
 - USB cable with charge adapters



1498/40A



Pb Wet, Gel Dry, Agm IP65

Multipurpose battery charger starter, 12-24V wheeled

- Specific WET-SPIRAL/GEL-AGM charging cycles
- Electronic control and protection system
- Battery desulfurization and recovery function
- Supply function
- Also suitable for Start&Stop batteries



*2 in 1
battery charger
+ starter*



800 mm
280 mm
300 mm

Power supply:	230V
Output voltage:	12-24V
Charging current:	1-40A
Starting current:	350A max cc
Charging capacity:	4-450Ah

014980140

~~£ 1.220,00~~ £ 732,00

1471M/C22

Pneumatic tool for pushing back and rotating right and left disc brake pistons with accessories in plastic case

- Automatic jack
- Thrust: 150 kg
- Operating pressure 5÷8 bar

014710101

~~£ 215,00~~ £ 129,00

350x310x85 mm



1438DSG

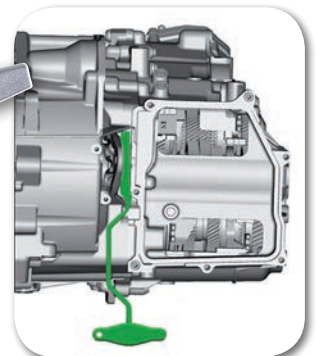
New item



Lever for locking/unlocking DSG dual-clutch gearbox from VAG group



*For DSG
gearbox*



014380200

~~£ 26,00~~ £ 15,60

Automotive

Oil goes into bush

1466/C5



Kit of 5 brake bleeding wrenches



Wrench does not have to be removed to bleed brakes

014660100

~~£ 117,00~~ £ 70,20



260x170x50 mm

1479L/S2

New item

Multipurpose wrecking bars, pair, made of Teflon®

014790510

~~£ 28,50~~ £ 17,10

Multi-purpose



High stress resistance

1493B/S5

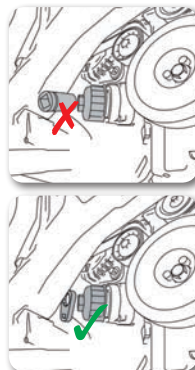
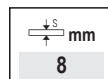
38"

Set of 5 bi-hex wrenches for hard-to-reach oil filter cartridges
Sizes included in set: 24-27-32-36-38 mm



014930599

~~£ 73,50~~ £ 44,10



1467

Brake fluid extractor
Pressure: min 5 bar, max 11.5 bar



014670001

~~£ 290,00~~ £ 174,00

1493/C19

38"

12"

Set of 18 oil filter wrenches, particularly suitable for Asian cars

- 6 hexagon sockets, sizes 24-27-30-32.5-36-38 mm, for filter cartridges
- Kit includes 1 universal adjustable wrench Ø 58÷93 mm

014930019

~~£ 215,00~~ £ 129,00

Sizes included in set:

Ø mm	of sides
63-64	14
66,5	14
74	14
79	15
84	14
87	16
92	15
94,5	15
100,5	15
64,5	14 hook wrench for Toyota cars
64,5	14 hook wrench for Lexus cars

490x450x60 mm



Mesh fabric shoe, highly breathable, with PU inserts and protective toe cap

- Aluminium toe cap
- Composite fibre penetration-proof insole
- FixLock closing makes it easier to put on and remove the shoe (traditional laces included)

7340B

~~£ 152,00~~ **£ 91,20**

FIT PRO NET

**EN ISO
20345
2011**

S1P SRC



EU	UK	
36	3,5	073400236
37	4,5	073400237
38	5	073400238
39	6	073400239
40	6,5	073400240
41	7	073400241
42	8	073400242
43	9	073400243
44	10	073400244
45	10,5	073400245
46	11	073400246
47	12	073400247

7340Y

~~£ 152,00~~ **£ 91,20**

FIT PRO NET

**EN ISO
20345
2011**

S1P SRC



EU	UK	
36	3,5	073400336
37	4,5	073400337
38	5	073400338
39	6	073400339
40	6,5	073400340
41	7	073400341
42	8	073400342
43	9	073400343
44	10	073400344
45	10,5	073400345
46	11	073400346
47	12	073400347

New item

7340R

~~£ 152,00~~ **£ 91,20**

FIT PRO NET

**EN ISO
20345
2011**

S1P SRC



EU	UK	
36	3,5	073400436
37	4,5	073400437
38	5	073400438
39	6	073400439
40	6,5	073400440
41	7	073400441
42	8	073400442
43	9	073400443
44	10	073400444
45	10,5	073400445
46	11	073400446
47	12	073400447

Safety footwear

7341N

~~£ 161,00~~ £ 96,60

Microsuede shoe, waterproof, with PU inserts and protective toe cap

- Aluminium toe cap
- Composite fibre penetration-proof insole
- FixLock closing makes it easier to put and remove the shoe (traditional laces included)

EU	UK	
36	3,5	073410236
37	4,5	073410237
38	5	073410238
39	6	073410239
40	6,5	073410240
41	7	073410241
42	8	073410242
43	9	073410243
44	10	073410244
45	10,5	073410245
46	11	073410246
47	12	073410247

FIT PRO 



EN ISO 20345 2011

S3 SRC

7398U

~~£ 11,00~~ £ 6,60

Anatomically shaped underfoot covers made of TPR GEL with high cushioning effect, plantar arch support and heel pad



36-40	073980058
41-46	073980063

New item

7290NA

~~£ 171,00~~ £ 102,60

Full-grain leather, shoe, waterproof, with reinforcement polyurethane toe cap cover and PU/TPU VIBRAM® outsole. ESD

- Composite toe cap
- Composite fibre penetration-proof insole

EU	UK	
36	3,5	072900336
37	4,5	072900337
38	5	072900338
39	6	072900339
40	6,5	072900340
41	7	072900341
42	8	072900342
43	9	072900343
44	10	072900344
45	10,5	072900345
46	11	072900346
47	12	072900347
48	13	072900348



 
 EN ISO 20345 2011 
 S3 SRC ESD
Speed

New item

7291NA

~~£ 177,00~~ £ 106,20

Full-grain leather ankle shoe, waterproof, with reinforcement polyurethane toe cap cover and PU/TPU VIBRAM® outsole. ESD

- Composite toe cap
- Composite fibre penetration-proof insole

EU	UK	
36	3,5	072910336
37	4,5	072910337
38	5	072910338
39	6	072910339
40	6,5	072910340
41	7	072910341
42	8	072910342
43	9	072910343
44	10	072910344
45	10,5	072910345
46	11	072910346
47	12	072910347
48	13	072910348



New item

7830ST

~~£ 58,00~~ **£ 34,80**

Stretch work trousers

- T/C twill, 250 g/m², grey



XS	078300000
S	078300001
M	078300002
L	078300003
XL	078300004
XXL	078300005
XXXL	078300006



7831ST

~~£ 43,00~~ **£ 25,80**

Stretch work Bermuda shorts,

- T/C twill, 250 g/m², grey

XS	078310000
S	078310001
M	078310002
L	078310003
XL	078310004
XXL	078310005
XXXL	078310006



- Slim fit
- Reinforced crotch
- Stretch waistband on sides
- Two rear pockets with strap closure
- Two large front pockets, one with small pocket
- Large left-side pocket with strap closure and badge insert
- Ruler pocket and hammer loop
- Knee pad inserts

New item

7835ST

~~£ 97,00~~ **£ 58,20**

Stretch work overalls Slim fit

- T/C twill, 63% polyester, 34% cotton, 3% stretch fabric, 250 g/m²
- Cuffs with strap adjusters
- Left-side chest pocket with strap closure and insert badge
- Right-side chest pocket with strap closure and pen inserts

XS	078350000
S	078350001
M	078350002
L	078350003
XL	078350004
XXL	078350005
XXXL	078350006



- Slim fit
- Reinforced crotch
- Stretch waistband
- Two large front pockets, one with small pocket
- Large left-side pocket with strap closure
- Ruler pocket and hammer loop
- Knee pad inserts



Work t-shirt

• Made of 100% jersey cotton, 180 g/m²

7548BL

~~£ 20,00~~ £ 12,00

• Blue



XS	075480000
S	075480001
M	075480002
L	075480003
XL	075480004
XXL	075480005
XXXL	075480006

7548G

~~£ 20,00~~ £ 12,00

• Grey



XS	075480100
S	075480101
M	075480102
L	075480103
XL	075480104
XXL	075480105
XXXL	075480106

7548N

~~£ 20,00~~ £ 12,00

• Black



XS	075480200
S	075480201
M	075480202
L	075480203
XL	075480204
XXL	075480205
XXXL	075480206

7687GV

~~£ 65,00~~ £ 39,00

Sleeveless jacket “down effect”

- External fabric: nylon 20D
- Down-like padding, 80 g/m²

7687GG

~~£ 65,00~~ £ 39,00

New item

S	076870101
M	076870102
L	076870103
XL	076870104
XXL	076870105
XXXL	076870106



New item

S	076870201
M	076870202
L	076870203
XL	076870204
XXL	076870205
XXXL	076870206

- Two side waist pockets
- Two internal pockets



Supplied with a convenient carry bag



*Beta Tools (UK) Limited
Unit D - Horton Enterprise Park
Hortonwood 50, Telford
Shropshire, TF1 7GZ
Sales: Tel. (01952) 677977*

*www.beta-tools.co.uk
sales@beta-tools.com*

Promotion valid from 01/04/2018 to 30/06/2018, subject to availability

The images are for reference only. Beta Utensili S.p.A. reserves the right to update and upgrade its product range without notice.