



Hafren
security fasteners

SECURITY FASTENERS HANDBOOK

DONT
RISK
IT...

SECURE IT.



Use Hafren security nuts & bolts.

With the continual increase in crime, vandalism and theft, the need to keep your products, possessions and property secure and intact is a necessity.

Hafren is the leading brand of security fasteners and fixings. The range includes security and tamper-resistant type screws, nuts and bolts that are either:

- Standard
- Unique
- Patented
- Bespoke

By this, Hafren can offer a secure option for a vast range of applications.

So when it comes to security, peace of mind, unrivalled quality. . . specify Hafren.

Contents

1. Why Hafren security fasteners / Contents
2. Kinmar® Permanent / Kinmar® Removable
4. Nogo™ / Oval Pan Head
6. Sentinel® / Case Study 1: Motorway Services
8. Anchors / Solok™
10. Scroll™ Nut / Armour Ring™
12. Shear Nuts & Bolts / 2-Hole
14. Clutch Head / Case Study 2: Public Sector
16. 6-Lobe Pin / Self Drilling Screws
18. Pin Hex / Bespoke Specials
20. Can you afford not to?



Page 2



Page 6



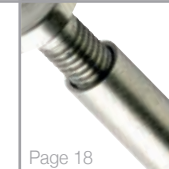
Page 10



Page 8



Page 16



Page 18



Page 12

Kinmar® Permanent

Patented product

The ultimate high security one-way nut.

This permanent nut requires a matching driver socket for installation giving you guaranteed torque levels and can be re-torqued if required. Not governed by a shear point and leaving no unplated surfaces, it leaves a clean smart finish.

- Stocked in Case Hardened Steel Zinc Plated (CR-3) and Galvanised, also stocked in A2 Stainless Steel
- Other materials and finishes available to order subject to minimum order quantities
- Kinmar® Permanent drive feature available to order in bolt form - subject to minimum order quantities



kinmar
permanent

Stock range:

BOX QTY 100

MATERIAL \ SIZE	M5	M6	M8	M10	M12
BZP STEEL	●	●	●	●	●
GALVANISED	●	●	●	●	●
A2 STAINLESS	●	●	●	●	●
DRIVER SIZE	KM6P	KM6P	KM6P	KM10P	KM12P



Installed using matching driver socket

Kinmar® Removable

Patented product

Unique Hafren segment shaped nut. The ultimate two-way security nut – extra resilient to attack.

This removable nut requires a matching driver socket for installation and removal. This cost effective nut has a smooth aesthetically pleasing design which makes it an extremely versatile nut.

- Stocked in Case Hardened Steel Zinc Plated (CR-3) and Galvanised, also stocked in A2 Stainless Steel
- Other materials and finishes available to order subject to minimum order quantities
- Kinmar® Removable drive feature available to order in bolt form - subject to minimum order quantities



kinmar
removable

Installed using matching driver socket



Stock range:

BOX QTY 100

MATERIAL \ SIZE	M5	M6	M8	M10	M12
BZP STEEL	●	●	●	●	●
GALVANISED	●	●	●	●	●
A2 STAINLESS	●	●	●	●	●
DRIVER SIZE	KM6R	KM6R	KM6R	KM10R	KM12R

Nogo™

Patented product

The Nogo™ is a 2-part enclosure offering the highest security for any nut or bolt.

This patented product doesn't require any specialist tools; you simply hammer the cap into the base making access to the enclosed nut or bolt near impossible.

- Home Office approved
- Sold Secure Silver Award
- Stocked in Case Hardened Steel Zinc Plated (CR-3)



Type 1: For bolts and screws



Type 2: For protruding studs



How it works:



Insert fixing through base.

Tighten fixing to desired torque.

Hammer cap into base.

Safe and secure.

Stock range:

BOX QTY 100

SIZE	M5	M6	M8	M10	M12
TYPE 1	●	●	●	●	●
TYPE 2	●	●	●	●	●

Oval Pan Head

A deceptive oval headed security screw.

It is not initially apparent that this fastener is oval. At a casual glance the fastener looks like a stud or rivet, leaving the potential intruder fooled. Installation is only achieved by using the matching driver socket.

- Case hardened for extra resistance to attack
- Stocked in Steel Zinc Plated (CR-3)



Oval Pan Head

Installed using matching driver socket



Stock range:

BOX QTY 100

LENGTH	10mm	12mm	16mm	20mm	25mm	30mm	40mm	DRIVER SIZE
M4	●	●	●	●	●	●	●	OP4
M5	●	●	●	●	●	●	●	OP56
M6	●	●	●	●	●	●	●	OP56
M8	TO ORDER ONLY (SUBJECT TO MINIMUM QTY)							

Sentinel®

Design rights apply

Unique one-way pozidrive security system.

This drive system only operates in a clockwise motion leaving a permanent finish. Ideal for easy and fast application using standard pozi screwdrivers.

- Stocked in Case Hardened Steel Zinc Plated (CR-3)
- Available in Twinthread Woodscrews and Metric Machine Screws
- Other materials, finishes and thread types can be manufactured to order - subject to minimum order quantities



Countersunk BZP
Twinthread Woodscrew



Countersunk BZP
Machine Screw



Button Head BZP
Machine Screw



Installed using standard pozidrive bits or drivers

One-way only



Stock range:

COUNTERSUNK ■ BRIGHT ZINC PLATED
TWINTHREAD WOODSCREWS ■ BOX QTY 200

GAUGE	LENGTH	3/4"	1"	1 1/4"	1 1/2"	2"	2 1/2"	3"	DRIVER SIZE
		19mm	25mm	32mm	38mm	50mm	63mm	75mm	
6	3.5mm	▼	▼						P22
8	4.2mm	▼	▼	▼	▼	▼			P22
10	4.8mm		▼	▼	▼	▼	▼		P22
12	5.5mm				▼	▼	▼	▼	P23

COUNTERSUNK / BUTTON HEAD ■ BRIGHT ZINC PLATED
METRIC MACHINE SCREWS ■ BOX QTY 100

GAUGE	LENGTH	12mm	16mm	20mm	25mm	30mm	40mm	50mm	DRIVER SIZE
		M4	●	●	●	●			
M5		●	●	●	●	●	●		P22
M6		●	●	●	●	●	●		P23
M8				■	■	■	■	■	P24

HEAD STYLES ▼ COUNTERSUNK ONLY
■ BUTTON HEAD ONLY ● COUNTERSUNK & BUTTON HEAD



Case Study 1: Motorway Services

Public areas such as Motorway Services experience high volumes of people. Security fasteners need to be used to keep your property where it belongs and deter the petty thief or vandal.

Don't take the risk - secure it -
"it's a small price to pay".



Anchors

Expanding fixings giving fast and easy application for heavy duty security.

Security Anchors save time and money when fixing applications that require a firm hold. They are suitable for fixing to a wide range of base materials such as brick, concrete, stone and masonry. Available in both permanent and removable options... for a hold that stays.



1. Countersunk A2 6-Lobe Pin Sleeve Anchor



2. Button Head A2 6-Lobe Pin Sleeve Anchor



3. Kinmar® Permanent BZP Sleeve Anchor



4. Kinmar® Removable BZP Sleeve Anchor



5. Button Head BZP Drill Out Shield Anchor



6. Button Head BZP Pin Hex Shield Anchor

ANCHORS

Stock range:

BOX QTY 50

STYLE SIZE	ANCHOR OPTION					
	1	2	3	4	5	6
M6 x 45mm		●	●	●		
M6 x 50mm	●					
M8 x 50mm			●	●		
M8 x 55mm	●	●				
M8 x 60mm			●	●		
M8 x 65mm					●	●
M8 x 70mm			●	●		
M8 x 75mm		●				
M8 x 80mm	●					
M8 x 90mm			●	●		
M10 x 60mm	●		●	●		
M10 x 65mm		●				
M10 x 70mm			●	●		
M10 x 75mm					●	●
M10 x 80mm	●	●	●	●		
M10 x 95mm			●	●		

Solok™

Patented product

This security drive ensures that each and every customer has their own unique 'one-of-a-kind' drive socket.

As there are millions of variations to the Solok™ drive socket, your driver key will be specific to you, therefore enhancing the level of security. Every new user gets a Solok™ code to which their screws and tools are made, meaning even somebody else's Solok™ tools will not fit screws made to your code.

- Engineered to keep other driver bits out
- Full range of Self Tapping and Metric Machine Screws available made to your unique drive code
- Manufactured in Carbon Steel and Stainless Steel
- Available to order in various finishes and other thread types - subject to minimum order quantities



Installed using unique-to-you driver tool



Solok™

Scroll™ Nut

Patented product

High security removable nut with a unique 'Scroll' drive.

The rounded design of this nut gives no sharp angles to provide grip for normal hand tools. It can only be installed and removed using the matching Scroll™ driver socket. Patented Scroll™ design is interesting and pleasing to the eye.

- Stocked in A2 Stainless Steel
- Other materials and finishes available to order - subject to minimum order quantities
- Scroll™ drive available to order in bolt form



SCROLL™
nut

Installed using matching driver socket



Stock range:

SCROLL™ NUTS

BOX QTY 100

SIZE	M3	M4	M5	M6	M8	M10	M12	M16	M20	M24
MATERIAL	●	●	●	●	●	●	●	●	●	●
A2 STAINLESS	●	●	●	●	●	●	●	●	●	●

Armour Ring™

Patented product

A simple conical collar which renders a standard hexagon nut or bolt tamper resistant.

The Armour Ring™ can be applied to any British or DIN standard hexagon nuts or bolts using a standard hammer or Armour Ring™ installation tool. It leaves a smooth clean finish which is often favoured by Health & Safety executives and isn't governed by a torque level like some one-way fasteners.

- Home Office approved
- Stocked in Steel Zinc Plated (CR-3) and A2 Stainless Steel



Armour Ring™
Installation Tool



Armour
Ring

How it works:



Place Armour Ring™ over existing hexagon fixing.



Hammer firmly in place.



Tamper resistant with no sharp edges

Stock range:

BOX QTY 100

SIZE	M6	M8	M10	M12	M16	M20
MATERIAL	●	●	●	●	●	●
BZP STEEL	●	●	●	●	●	●
A2 STAINLESS	●	●	●	●	●	●

Shear Nuts & Bolts

The Shear System is a high security permanent fastener.

Both the Shear Nut and the Shear Bolt have a hexagon part which shears off at a predetermined torque. Installed using standard hex socket or spanner. Once installed, the shear nut leaves a tamper resistant cone and the shear bolt leaves a tamper resistant head of your choice e.g. Button Head or Countersunk.

- Shear Nuts stocked in Bright Zinc Plated (CR-3) Steel, Galvanised Steel and A2 Stainless Steel
- Shear Bolts manufactured to order in most common materials and finishes



Countersunk Shear Bolt



Button Head Shear Bolt



Shear Nut

Shear Nuts Shear Bolts



How it works:

Insert Shear Bolt into application

Tighten using standard spanner



Hex part shears off at set torque level to leave a smooth permanent finish

Stock range:

SHEAR NUTS ■ BOX QTY 100

SIZE	M6	M8	M10	M12	M16	M20	M24
BZP STEEL	●	●	●	●	●	●	
A2 STAINLESS	●	●	●	●	●	●	TO ORDER
GALVANISED		●	●	●	●	●	

2-Hole

Popular aesthetically pleasing drive for any two-way application.

This drive system, sometimes known as Snake Eye® or Pig Nose is designed for low to medium torque applications. It has 2 holes drilled into the head which requires a unique 2-pin matching driver to install and remove it.

- Full range of Self Tapping and Metric Machine Screws stocked in A2 Stainless Steel
- Other styles of fasteners available in the 2-Hole drive system: Barrel Nuts, Male & Female Bolts, Grub Screws, Glass Screws, Large Disc Head Screws.



Countersunk A2 Self Tapper



Pan Head A2 Self Tapper



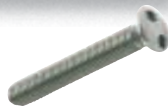
Countersunk A2 Machine Screw



Pan Head A2 Machine Screw



2-Hole Tooling



Raised Countersunk A2 Machine Screw

2-Hole

Stock range:

COUNTERSUNK / PAN HEAD

AB TYPE SELF TAPPING SCREWS ■ BOX QTY 100

LENGTH	3/8"	1/2"	5/8"	3/4"	1"	1 1/4"	1 1/2"	2"	2 1/2"	3"	DRIVER SIZE
GAUGE	9.5mm	13mm	16mm	19mm	25mm	32mm	38mm	50mm	63mm	75mm	
4	2.9mm	●	●	●	●	●	●				TH3
6	3.5mm	●	●	●	●	●	●				TH4
8	4.2mm	●	●	●	●	●	●				TH5
10	4.8mm	●	●	●	●	●	●	●	●		TH6
12	5.5mm		●		●	●	●				TH7
14	6.3mm			●	●	●	●				TH8

COUNTERSUNK / RAISED COUNTERSUNK / PAN HEAD

METRIC MACHINE SCREWS ■ BOX QTY 100

LENGTH	6mm	8mm	10mm	12mm	16mm	20mm	25mm	30mm	35mm	40mm	50mm	DRIVER SIZE
GAUGE												
M3		▼	●	●	●	▼	▼	▼	▼			TH4
M3.5				★			★	★		★	★	TH3
M4	▲		●	●	●	●	●	▼	▼			TH5
M5				●	●	●	●	●	▼			TH6
M6				●	●	●	●	●		●		TH8
M8	TO ORDER ONLY										N8	
M10	TO ORDER ONLY										N14	

HEAD STYLES

- ▼ COUNTERSUNK ONLY
- ★ RAISED COUNTERSUNK ONLY
- ▲ PAN HEAD ONLY
- COUNTERSUNK & PAN HEAD

Clutch Head

The original one-way security drive.

The special ridged design of this drive means that it can only operate in a clockwise motion. Installed using standard slotted screwdriver - no specialist tools required.

- Stocked in Case Hardened Steel Zinc Plated (CR-3) Woodscrews and A2 Stainless Steel Self Tapping Screws
- Available in A2 Stainless Steel Metric Machine Screws - Please enquire
- Available in Chrome Plated Shoulder Screws and Barrel Nuts - Please enquire



Countersunk BZP Twinthread Woodscrew



Countersunk A2 Machine Screw



Round Head A2 Machine Screw



Chrome Plated Shoulder Screw



Chrome Plated Barrel Nut



Stock range:

COUNTERSUNK ■ BRIGHT ZINC PLATED
TWINTHREAD WOODSCREWS ■ BOX QTY 200

GAUGE	LENGTH	3/4"	1"	1 1/4"	1 1/2"	2"	2 1/2"	3"
		19mm	25mm	32mm	38mm	50mm	63mm	75mm
6	3.5mm	▼	▼					
8	4.2mm	▼	▼	▼	▼	▼		
10	4.8mm		▼	▼	▼	▼		
12	5.5mm				▼	▼	▼	▼

COUNTERSUNK / ROUND HEAD ■ A2 STAINLESS STEEL
AB TYPE SELF TAPPING SCREWS ■ BOX QTY 100

GAUGE	LENGTH	1/2"	3/4"	1"	1 1/4"	1 1/2"	2"	3"	REMOVAL TOOL
		13mm	19mm	25mm	32mm	38mm	50mm	75mm	
6	3.5mm	■	●	●					RT41
8	4.2mm	●	●	●	●	●	●		RT51
10	4.8mm	■	■	●	●	●	●		RT51
14	6.3mm	■	■	■			■	■	RT61

TRUSS HEAD ■ CHROME PLATED
SHOULDER SCREWS / BARREL NUTS ■ BOX QTY 100

GAUGE	LENGTH	1/2"	5/8"	3/4"	5/16"	1 1/16"	1 1/8"	1 1/4"
		13mm	16mm	19mm	24mm	27mm	30mm	33mm
10-24 UNC SHS			◆	◆	◆	◆	◆	◆
10-24 UNC BN	◆	◆						

HEAD STYLES
▼ COUNTERSUNK ONLY ◆ TRUSS HEAD
■ ROUND HEAD ONLY ● COUNTERSUNK & ROUND HEAD



Case Study 2:

Public Sector

Rail stations are a typical area of the public sector where there are easy targets for terrorism, vandalism and petty theft or maybe just health and safety requirements.

Don't take the risk - secure it - "it's a small price to pay".



6-Lobe Pin

6-Lobe recess manufactured with an internal pin.

Popular security drive for high torque applications. Quickly and easily installed and removed using matching tooling.

- Full range of AB Self Tapping and Metric Machine Screws stocked in A2 Stainless Steel
- Other styles of fasteners in the 6-Lobe Pin drive system
 - Barrel Nuts
 - Grub Screws
 - Concrete Tapping Screws
 - Tri-Lobular Metal Thread Screw
 - Plastic Tapping Screws



Countersunk A2 Self Tapper



Button Head A2 Self Tapper



Countersunk A2 Machine Screw



Button Head A2 Machine Screw

6-Lobe Pin



6-Lobe Pin Tooling



Raised Countersunk A2 Machine Screw

Stock range:



COUNTERSUNK / BUTTON HEAD
AB TYPE SELF TAPPING SCREWS ■ BOX QTY 100

GAUGE	LENGTH	3/8"	1/2"	5/8"	3/4"	1"	1 1/4"	1 1/2"	2"	2 1/2"	3"	DRIVER SIZE
		9.5mm	13mm	16mm	19mm	25mm	32mm	38mm	50mm	63mm	75mm	
4	2.9mm		▼		▼							T10
6	3.5mm			●	●	●	●	▼	●			T10 / T15
8	4.2mm	■	●	●	●	●	●	●	●			T15 / T20
10	4.8mm		●	●	●	●	●	●	●	▼	▼	T25
12	5.5mm					●	●	●	●	●	●	T27
14	6.3mm				●	●	●	●	●			T30

COUNTERSUNK / RAISED COUNTERSUNK / BUTTON HEAD
METRIC MACHINE SCREWS ■ BOX QTY 100

GAUGE	LENGTH	6 mm	8 mm	10 mm	12 mm	16 mm	20 mm	25 mm	30 mm	35 mm	40 mm	50 mm	55 mm	60 mm	65 mm	70 mm	75 mm	80 mm	100 mm	DRIVER SIZE	
		M3		●	●	●	●	●	●												
M3.5					★		★	★	★		★	★									T10
M4		■	■	●	●	●	●	●	●		■	■					▼				T20
M5			●	●	●	●	●	●	●		●	●							▼		T25
M6			▼	●	●	●	●	●	●		●	●							■		T30
M8					■	●	●	●	●		●	●	●	●					■	■	T40
M10							■	■	■	■	■	■	■	●	■				●		T45

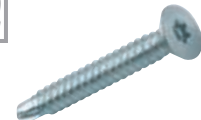
HEAD STYLES
▼ COUNTERSUNK ONLY ★ RAISED COUNTERSUNK ONLY
■ BUTTON HEAD ONLY ● COUNTERSUNK & BUTTON HEAD

Self Drilling Screws

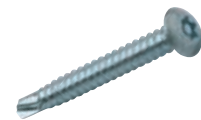
Self Drilling Screws manufactured with a 6-Lobe Pin drive.

Drilling tips provide fast and easy application eliminating the need to pre-drill. Installed and removed using 6-Lobe Pin tooling.

- Stocked in Steel Zinc Plated and Stainless Steel



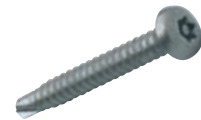
Countersunk BZP



Button Head BZP



Pan Head BZP



Pan Head A2



6-Lobe Pin Tooling



6-Lobe Pin Tooling

Self Drilling Screws

Stock range:

COUNTERSUNK / BUTTON HEAD / PAN HEAD
BRIGHT ZINC PLATED ■ BOX QTY 100

GAUGE	LENGTH	1/2"	3/4"	1"	1 1/4"	1 1/2"	2"	DRIVER SIZE
		13mm	19mm	25mm	32mm	38mm	50mm	
8	4.2mm	●	●	●	▼	●		T15
10	4.8mm	●	●	●		●	●	T20 / T25
12	5.5mm			■		■		T27
14	6.3mm		■	●		●	●	T27

PAN HEAD
410 STAINLESS STEEL ■ BOX QTY 100

GAUGE	LENGTH	1/2"	3/4"	1"	1 1/4"	1 1/2"	2"	DRIVER SIZE
		13mm	19mm	25mm	32mm	38mm	50mm	
8	4.2mm	◐	◐	◐	◐	◐		T20
10	4.8mm	◐	◐	◐				T25
14	6.3mm		◐	◐		◐	◐	T30

HEAD STYLES
▼ COUNTERSUNK ONLY ◐ PAN HEAD ONLY
■ BUTTON HEAD ONLY ● COUNTERSUNK & BUTTON HEAD

Pin Hex

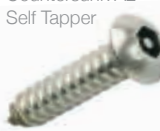
Hexagon socket screws manufactured with an internal pin.

This drive prevents removal with standard hexagon tools. Suitable for medium torque applications and is one of the most difficult to remove without the matching driver.

- Full range of AB Self Tapping and Metric Machine Screws stocked in A2 Stainless Steel
- Other styles of fasteners in the Pin Hex drive system: Socket Cap Screws, Grub Screws and Barrel Nuts



Countersunk A2 Self Tapper



Button Head A2 Self Tapper



Countersunk A2 Machine Screw



Button Head A2 Machine Screw

Pin Hex



Pin Hex Tooling



Raised Countersunk A2 Machine Screw

Stock range:

COUNTERSUNK / BUTTON HEAD

AB TYPE SELF TAPPING SCREWS ■ BOX QTY 100

GAUGE	LENGTH											DRIVER SIZE
	3/8"	1/2"	5/8"	3/4"	1"	1 1/4"	1 1/2"	2"	2 1/2"	3"		
6	3.5mm	●	●	●	●	●	●	●				H30
8	4.2mm	■	●	●	●	●	●	●	●			H40
10	4.8mm		●	●	●	●	●	●	●	●		H40
12	5.5mm			●	●	●	●	●				H40
14	6.3mm			●	●	●	●	●				H40

COUNTERSUNK / RAISED COUNTERSUNK / BUTTON HEAD

METRIC MACHINE SCREWS ■ BOX QTY 100

GAUGE	LENGTH											DRIVER SIZE	
	8mm	10mm	12mm	16mm	20mm	25mm	30mm	35mm	40mm	50mm	60mm		100mm
M3		●	●	●	●								H20
M3.5			★		★	★	★		★	★	★		H30
M4	●	●	●	●	●	●	●		●	●	●		H40
M5	▼	●	●	●	●	●	●		●	●	●		H40
M6	▼	●	●	●	●	●	●		●	●	●		H40
M8			●	●	●	●	●	●	●	●	●		H50
M10				■	●	●	●		●	●	●	■	H60
M12					●	●	●		●	●	■		H80

HEAD STYLES

- ▼ COUNTERSUNK ONLY
- ★ RAISED COUNTERSUNK ONLY
- BUTTON HEAD ONLY
- COUNTERSUNK & BUTTON HEAD

Bespoke Specials

We are able to offer a bespoke made to measure range of security fasteners.

With all types of specials, minimum order quantities and varying lead times apply depending on your size and material requirements. We have listed some available thread types, materials and finishes, but you may be looking for something totally different and unique. If so, send us your drawings and samples and we'll get you a quote.



A.



D.

Tri-Head



E.



H.



M.



B.



C.



F.



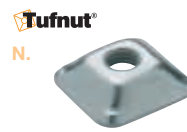
G.



I.



J.



N.



O.

1 Bespoke Specials 2

Some available Thread Types, Materials and Finishes:

- Thread Types
 - Self Tapping Screws
 - Machine Screws
 - Woodscrews
 - Self Drilling Screws
 - Thread Forming Screws
 - Concrete Tapping Screws
 - Dog-Point Screws
- Materials
 - A4 Stainless Steel
 - Carbon Steel
 - Aluminium
 - Brass
- Finishes
 - Chrome Plated
 - Black Passivated
 - Brass Plated
 - Nickel Plated
 - Copper Plated
 - Painted Heads
 - Powder Coated
 - Thread Patching

Many other types and styles available - please enquire



K.



L.

TORXplus

4-Hole Nut

Can you
**afford
not to?**

Whatever your sector...

- Council
- Prison
- Automotive
- Architect
- Construction
- School
- Airport
- Hospital
- Public Transport
- Fabrication
- Museum
- Ministry of Defence
- Engineering
- Security Products
- Fencing
- Shopfitting
- Architectural Ironmongery
- Signage
- Sports Stadiums
- Street Furniture

...and many more...

**you need Hafren
security fasteners**

Don't lose it . . .



. . . Secure it.