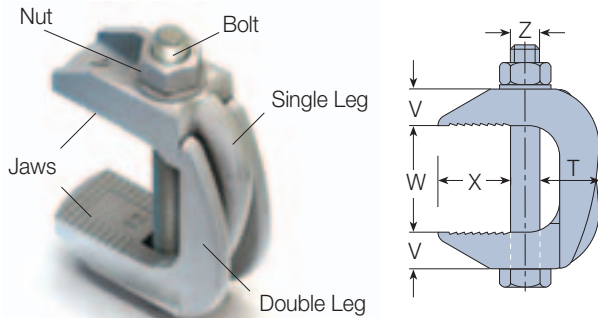


### Type F9

Malleable iron, bright zinc plated / hot dip galvanised



Flange Clamp for connecting all types of parallel running steelwork with flanges of the same width. Can be used with bolts or alternatively with threaded rod.



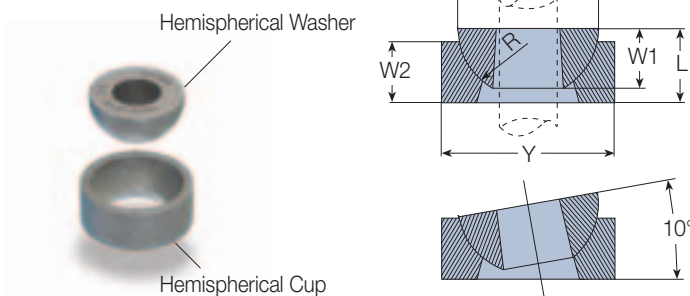
Not suitable for tapered flanges.

Product Code		Bolt 4.6 Z	Safe Working Loads (5:1 Factor of Safety) Tensile / 1 Bolt kN	Torque Nm	Clamping Range		Dimensions		
with Bolt	without Bolt				W mm	X mm	V mm	T mm	Width mm
F910NC	F910NB	M10	2	20	19 - 42	25	13	19	24
F912NC	F912NB	M12	2.8	39	26 - 60	35	17	24	30
F916NC	F916NB	M16	5.6	93	29 - 69	43	21	28	35
F920NC	F920NB	M20	8.4	177	32 - 82	51	25	35	44
F924NC	F924NB	M24	14.0	235	45 - 95	76	38	55	63

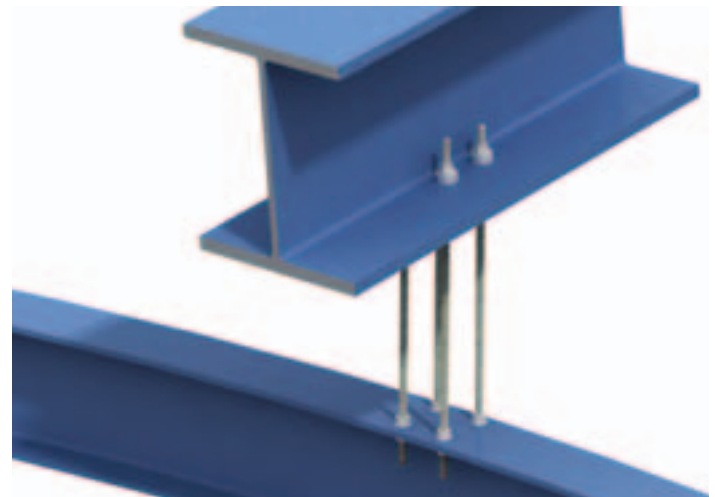
Order example: F910NC HDG

### Type HW/HC

Malleable iron, bright zinc plated / hot dip galvanised



For vertical suspension on angled surface of up to 10° swing either side of the vertical. The hemispherical washer (HW) can be used without the cup. Loads are subject to applications, please contact Lindapter.



Product Code		Hemispherical Washer		Hemispherical Cup		Hemispherical Washer & Cup	
Hemispherical Washer	Hemispherical Cup	X	W <sub>1</sub>	Y	W <sub>2</sub>	R	L
mm		mm	mm	mm	mm	mm	mm
HW06	-	19	9	-	-	-	-
HW08	-	22	10	-	-	-	-
HW10	HC10	25	12	32	12	13	14
HW12	HC12	29	12	35	12	14	16
HW16	HC16	34	16	41	16	17	19
HW20	HC20	44	19	54	19	22	24
HW24	HC24	57	25	67	25	29	32

Order example: HC10 BZP