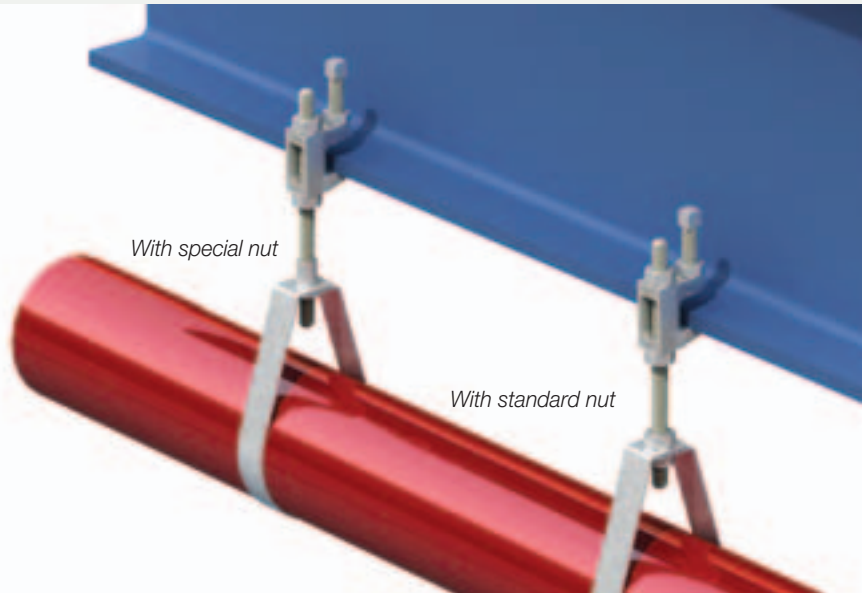
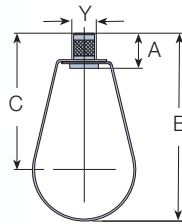


Type SH

Pre-galvanised strip



The strap hanger carries FM approval for use in fire sprinkler installations. Supplied with or without a hanger nut.

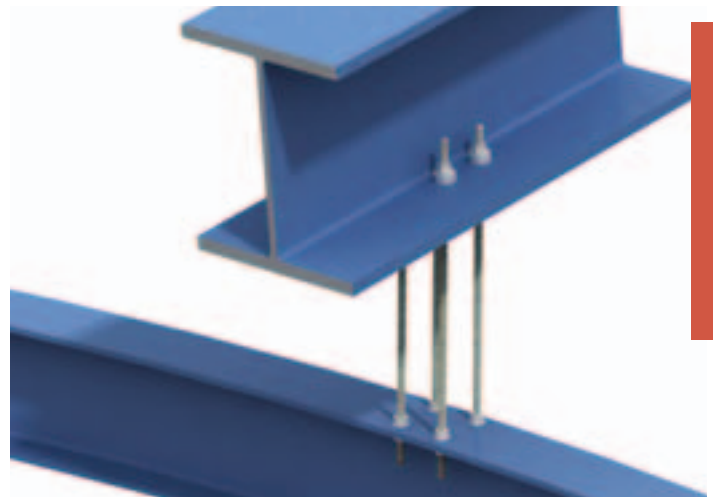
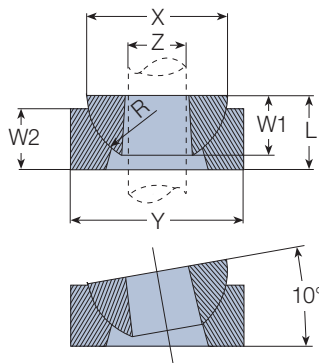
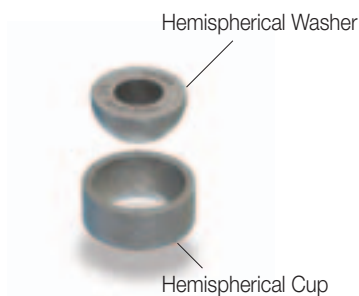
Product Code		Pipe Bore	Nuts Tapped	Hole Ø Y mm	Dimensions		
with Nut	without Nut				A mm	B mm	C mm
SH025N	SH025	25	M8 or M10	11	22	75	58
SH032N	SH032	32	M8 or M10	11	22	86	64
SH040N	SH040	40	M8 or M10	11	22	99	74
SH050N	SH050	50	M8 or M10	11	22	116	85
SH065N	SH065	65	M8 or M10	11	22	135	97

Product Code		Pipe Bore	Nuts Tapped	Hole Ø Y mm	Dimensions		
with Nut	without Nut				A mm	B mm	C mm
SH080N	SH080	80	M8 or M10	11	22	159	114
SH100N	SH100	100	M8 or M10	11	22	219	161
SH125N	SH125	125	M12	13	27	247	177
SH150N	SH150	150	M12	13	27	284	200
SH200N	SH200	200	M16	18	24	373	261

Order example: SH025N with M10 hanger nut

Type HW/HC

Malleable iron, bright zinc plated / hot dip galvanised



For vertical suspension on angled surface of up to 10° swing either side of the vertical. The hemispherical washer (HW) can be used without the cup. Loads are subject to applications, please contact Lindapter.

Product Code		Dimensions						
Hemispherical Washer	Hemispherical Cup	Hemispherical Washer		Hemispherical Cup		Hemispherical Washer & Cup		
	mm	X mm	W ₁ mm	Y mm	W ₂ mm	R mm	L mm	
HW06	-	19	9	-	-	-	-	
HW08	-	22	10	-	-	-	-	
HW10	HC10	25	12	32	12	13	14	
HW12	HC12	29	12	35	12	14	16	
HW16	HC16	34	16	41	16	17	19	
HW20	HC20	44	19	54	19	22	24	
HW24	HC24	57	25	67	25	29	32	

Order example: HC10 BZP