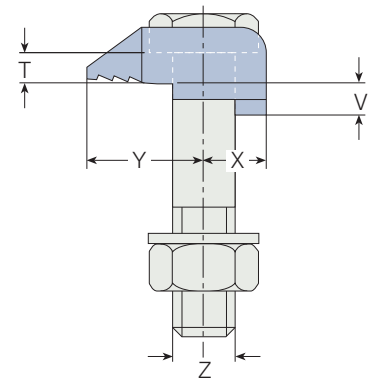
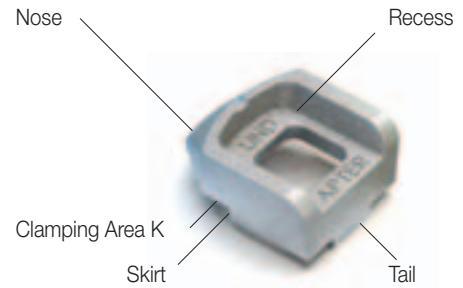
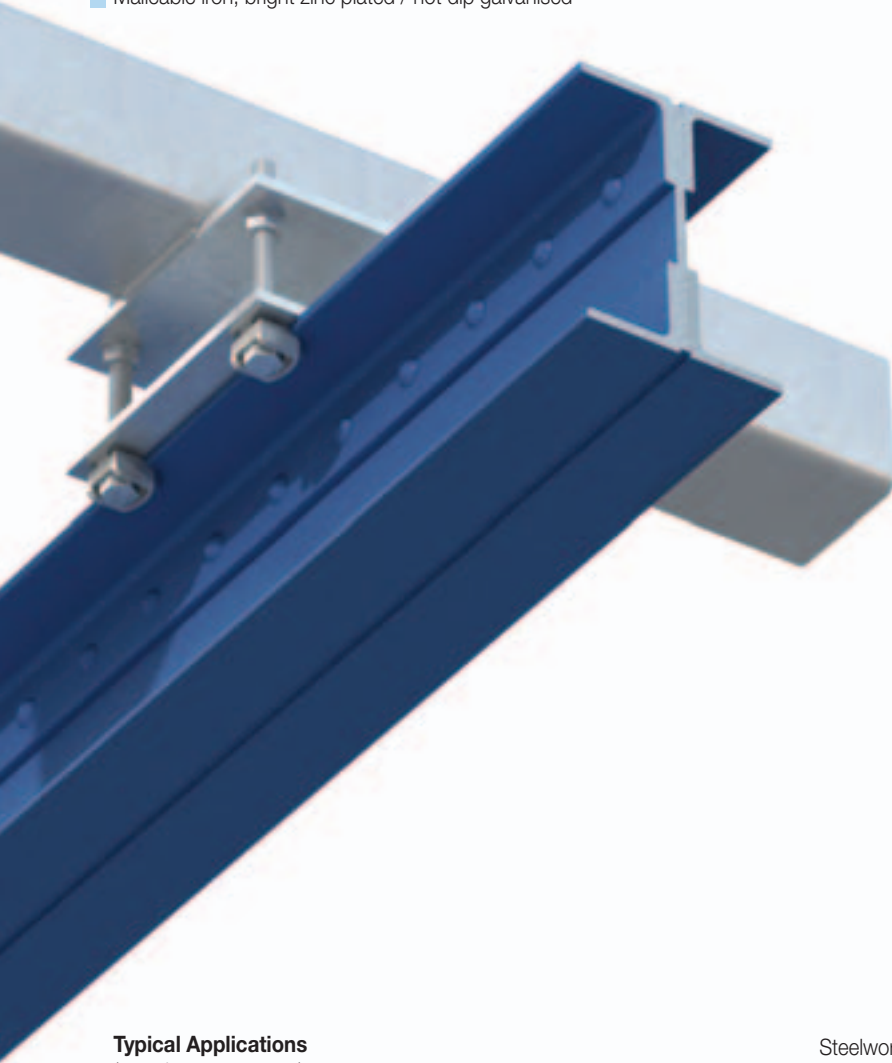
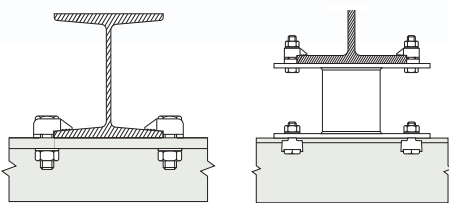


Type A

Malleable iron, bright zinc plated / hot dip galvanised



Typical Applications
(see also page 36-39)



Steelwork clamp with recessed top to hold the bolt head captive whilst the nut is tightened. The skirt prevents the clamp rotating during installation. Suitable for flanges up to 8°. The clamp is installed correctly when the area 'K' grips the flange. The tail must be chosen to suit the thickness of the flange being gripped. For correct tail length/packing combinations please see page 15.

Product Code	Bolt 8.8 Z	Safe Working Loads (5:1 Factor of Safety)			Torque Nm	Y mm	X mm	Dimensions Tail Length V			T mm	Width mm
		Tensile / 1 Bolt kN	Frictional / 2 Bolts kN	short mm				medium mm	long mm			
A08	M8	1.0	-	6	16	8	-	4	-	4	20	
A10	M10	1.5	-	20	20	11	4	5	7	5	26	
A12	M12	5.8	0.7	69	26	13	4.5	6	9.5	6	29	
A16	M16	7.3	1.5	147	30	16	5.5	8	11	8	36	
A20	M20	14.7	3	285	36	19	7	10	12.5	10	46	
A24	M24	19.7	4.5	491	48	25	9	12	16	12	55	

➤ For higher loads the type AF should be used (see page 16).

■ Order example: A16 medium HDG

Location and End Plates

- L₁ = Plate length
- L₂ = Plate width
- l_{1M}, l_{2M} = Hole centres
- b₁, b₂ = Flange width
- d = Hole Ø
- s = Plate thickness

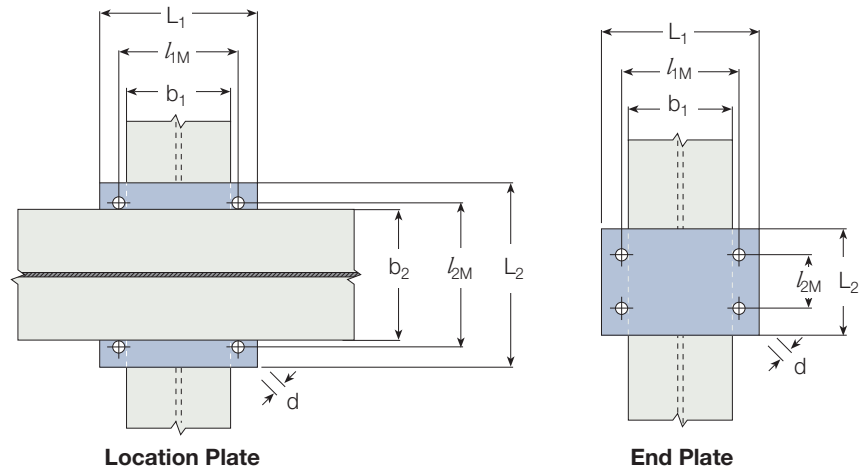


Plate Dimensions

Material: Mild Steel Grade S275 JR (for other grades please contact Lindapter)

Bolt Z	Hole Ø d (mm)	Location Plate			End Plate ¹⁾				
		Plate Thickness s (mm)	Hole Centres l _{1M} , l _{2M} (mm)	Length/Width min L ₁ , min L ₂ (mm)	Plate Thickness s (mm)	Hole Centre l _{1M} (mm)	Length min L ₁ (mm)	Hole Centre min l _{2M} (mm)	Width min L ₂ (mm)
M8	9	6	b + 9	b + 36	10	b ₁ + 9	b ₁ + 36	40	l _{2M} + 40
M10	11	8	b + 11	b + 44	12	b ₁ + 11	b ₁ + 44	50	l _{2M} + 40
M12	13	8	b + 13	b + 54	12	b ₁ + 13	b ₁ + 54	60	l _{2M} + 50
M16	18	10	b + 18	b + 70	15	b ₁ + 18	b ₁ + 70	70	l _{2M} + 60
M20	22	12	b + 22	b + 88	20	b ₁ + 22	b ₁ + 88	90	l _{2M} + 70
M24	26	15	b + 26	b + 104	25	b ₁ + 26	b ₁ + 104	110	l _{2M} + 90

1) Dependant on the use of the end plate the thickness might need to be increased.

Calculation of bolt length see page 11

Tail Length / Packing Combinations for Types A & B

For beams up to and including 5° slope

Flange Thickness (mm)	Types A & B															
	M12				M16				M20				M24			
	A,B	CW	P1S	P2S	A,B	CW	P1S	P2S	A,B	CW	P1S	P2S	A,B	CW	P1S	P2S
5	s	-	-	-	s	-	-	-	■	-	-	-	■	-	-	-
6	m	-	-	-	s	-	-	-	■	-	-	-	■	-	-	-
7	s	1	-	-	m	-	-	-	s	-	-	-	■	-	-	-
8	s	1	-	-	m	-	-	-	s	-	-	-	▲	-	-	-
9	m	1	-	-	s	1	-	-	m	-	-	-	s	-	-	-
10	l	-	-	-	l	-	-	-	m	-	-	-	s	-	-	-
11	m	2	-	-	l	-	-	-	s	1	-	-	m	-	-	-
12	l	1	-	-	s	2	-	-	s	1	-	-	m	-	-	-
13	s	1	1	-	s	1	-	-	l	-	-	-	s	1	-	-
14	s	1	1	-	l	1	-	-	m	1	-	-	s	1	-	-
15	l	2	-	-	s	3	-	-	s	2	-	-	l	-	-	-
16	l	-	1	-	m	-	1	-	s	2	-	-	l	-	-	-
17	m	2	1	-	l	2	-	-	s	-	1	-	s	2	-	-
18	m	-	-	1	l	2	-	-	m	2	-	-	s	2	-	-
19	s	1	-	1	l	-	1	-	s	3	-	-	l	1	-	-
20	s	1	1	-	l	3	-	-	m	-	1	-	l	1	-	-
21	m	1	-	1	l	3	-	-	s	1	1	-	s	-	1	-
22	l	-	-	1	l	1	1	-	m	3	-	-	s	-	1	-
23	s	-	1	1	l	1	1	-	l	-	1	-	m	-	1	-
24	m	-	1	1	m	-	-	1	m	1	1	-	m	-	1	-
25	s	1	1	1	l	2	1	-	s	2	1	-	s	1	1	-
26	s	1	1	1	l	2	1	-	s	2	1	-	s	1	1	-
28	l	-	1	1	s	2	-	1	m	2	1	-	l	-	1	-
30	m	-	-	2	l	1	-	1	m	-	-	1	s	2	1	-

For thicker flanges please contact Lindapter.

s = short m = medium l = long P1S = P1 short P2S = P2 short ■ = Type not applicable ▲ = Please contact Lindapter

Tail Length / Packing Combinations for Types A & B

For IPN-Beams of an 8° slope

IPN Profile	Types A & B															
	M12				M16				M20				M24			
	A,B	CW	P1S	P2S	A,B	CW	P1S	P2S	A,B	CW	P1S	P2S	A,B	CW	P1S	P2S
80	■	-	-	-	■	-	-	-	■	-	-	-	■	-	-	-
100	■	-	-	-	■	-	-	-	■	-	-	-	■	-	-	-
120	s	-	-	-	■	-	-	-	■	-	-	-	■	-	-	-
140	s	-	-	-	■	-	-	-	■	-	-	-	■	-	-	-
160	m	-	-	-	s	-	-	-	■	-	-	-	■	-	-	-
180	m	-	-	-	s	-	-	-	■	-	-	-	■	-	-	-
200	s	1	-	-	▲	-	-	-	■	-	-	-	■	-	-	-
220	s	1	-	-	▲	-	-	-	■	-	-	-	■	-	-	-
240	m	1	-	-	m	-	-	-	s	-	-	-	■	-	-	-
260	m	1	-	-	m	-	-	-	s	-	-	-	■	-	-	-
280	l	-	-	-	▲	-	-	-	▲	-	-	-	s	-	-	-
300	s	-	1	-	▲	-	-	-	m	-	-	-	s	-	-	-
320	m	2	-	-	l	-	-	-	m	-	-	-	s	-	-	-
340	l	1	-	-	l	-	-	-	s	1	-	-	▲	-	-	-
360	s	1	1	-	▲	-	-	-	l	-	-	-	m	-	-	-
380	m	3	-	-	s	-	1	-	l	-	-	-	m	-	-	-
400	l	2	-	-	l	1	-	-	▲	-	-	-	s	1	-	-
425	▲	-	-	-	m	-	1	-	▲	-	-	-	▲	-	-	-
450	▲	-	-	-	m	-	1	-	▲	-	-	-	▲	-	-	-
475	▲	-	-	-	▲	-	-	-	▲	-	-	-	l	-	-	-
500	▲	-	-	-	▲	-	-	-	▲	-	-	-	l	-	-	-
550	▲	-	-	-	▲	-	-	-	▲	-	-	-	▲	-	-	-
600	▲	-	-	-	▲	-	-	-	▲	-	-	-	▲	-	-	-