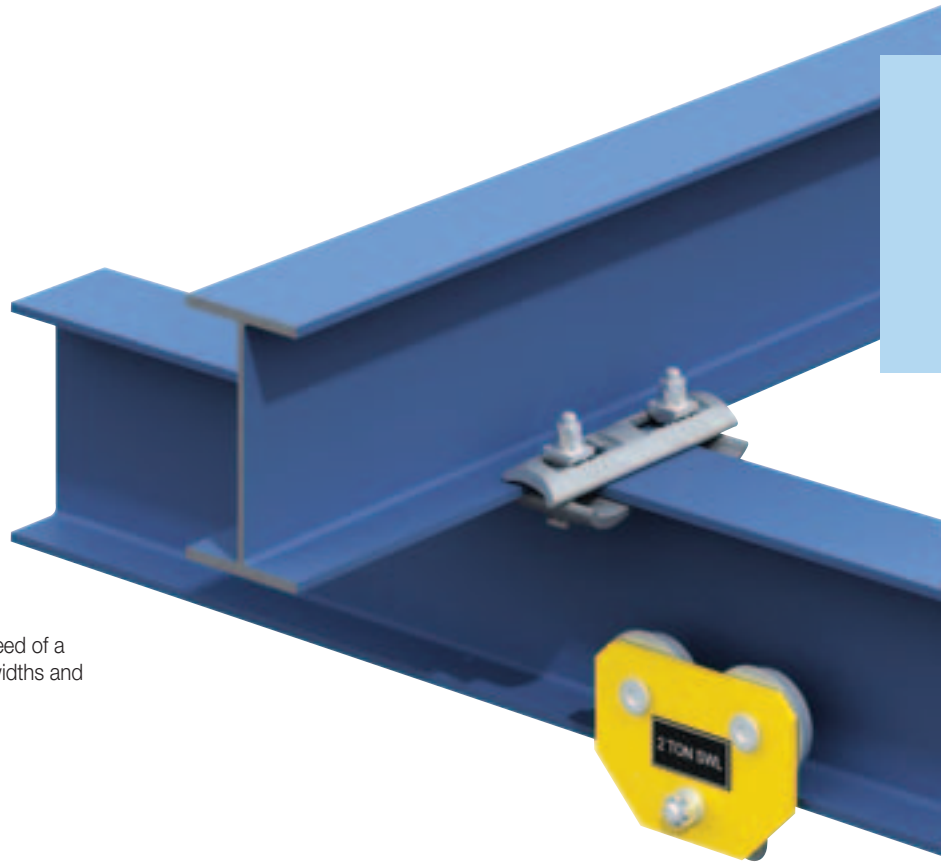
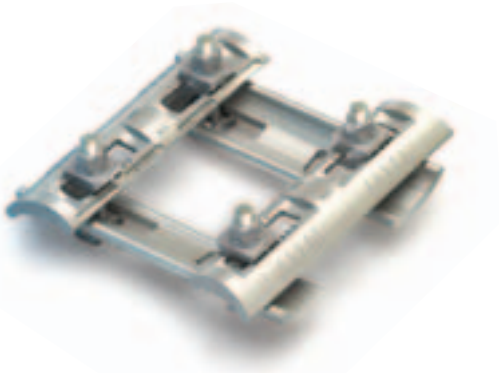


### Type FC

Forged steel, bright zinc plated plus JS500

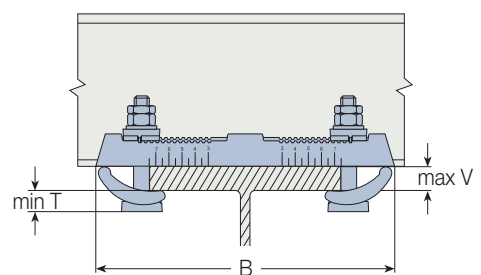
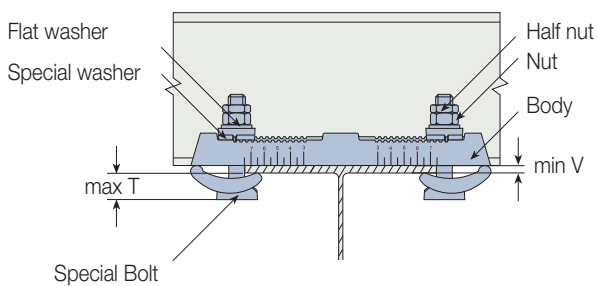


The Flush Clamp is a Girder Clamp System without the need of a location plate. Suitable for connecting beams of varying widths and thicknesses. Suitable for flanges up to 10° slope.

Product Code	Special Bolt	Safe Working Loads (5:1 Factor of Safety)			Clamping Range V		Dimensions	
		Tensile / 4 Bolts kN	Frictional / 4 Bolts kN	Torque Nm	Flange Thickness mm	Flange Width <sup>1)</sup> mm	T mm	B mm
FC16	M16	30.0	7.5	147	5 - 19	75 - 180	22 - 27	304

1) Depending on beam connection angles (see table below).

Order example: FC16



#### Minimum Possible Beam Connection Angles

		Top Beam				
		76.2 mm	101.6 mm	127.0 mm	152.4 mm	177.8 mm
Bottom Beam	76.2 mm	45°	50°	55°	65°	75°
	101.6 mm	50°	50°	55°	65°	75°
	127.0 mm	55°	55°	55°	65°	75°
	152.4 mm	65°	65°	65°	65°	75°
	177.8 mm	75°	75°	75°	75°	80°

